



Rochester, NY - Photo by Sheridan Vincent

KEY ATTRACTIONS

FIRST TIME VISITORS TOUR

George Eastman Museum - The world's leading museum of photography and motion pictures, and the National Historic Landmark mansion and gardens of Kodak founder George Eastman, the father of popular photography and motion picture film.

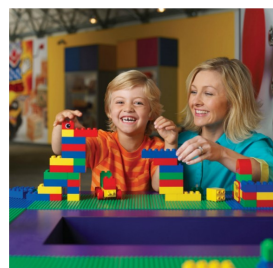
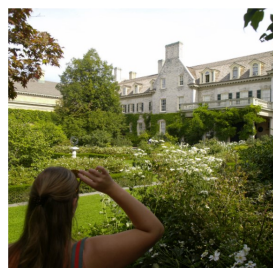
National Museum of Play® at The Strong - The second largest museum for children in America, it is also home to the National Toy Hall of Fame, the Toy Industry Hall of Fame, an in-door butterfly garden, and one of the largest collections of electronic games in America, and the world.

Seneca Park Zoo - This family-friendly attraction features playgrounds, educational centers as well as habitats for a variety of species including African lions, olive baboons, African elephants, river, polar bears, sea lions and African penguins, Bornean orangutans, a white rhino, a curious mob of meerkats, a pair of ring-tailed lemurs, a pair of snow leopards and more.

National Susan B. Anthony Museum & House - Preserves the National Historic Landmark where the great women's rights activist and reformer, Susan B. Anthony, lived for 40 of her most politically active years. The museum collects and exhibits artifacts related to her life and work.

Rochester Museum & Science Center - Experience Hands-on, educational and fun exhibits that exploring science and technology, the natural environment, and the rich history and culture of Western New York. Also home to the Strasenburgh Planetarium, where visitor will enjoy star shows, imax and Cumming Nature Center.

Mount Hope Cemetery - Dedicated in 1838, Mount Hope is America's first municipal Victorian cemetery. Set in a picturesque landscape shaped by retreating glaciers, the cemetery infinitely varied tombstones and structures across 196 acres. Susan B. Anthony and Frederick Douglass are both buried there.



Follow Us On



VISIT ROCHESTER: 45 East Avenue, Suite 400, Rochester NY 14604

Phone: 800-677-7282 or 585-279-8318 • Fax: 585-232-4822 • VisitRochester.com

CONTACTS: Greg Marshall - VP of Marketing - GregM@visitrochester.com

Sonia Asencio - Tourism Sales Program Coordinator - SoniaA@visitrochester.com